



BPC WEST SEWERSHED PACKAGE 5B
SAWS Solicitation No. CO-00477
SAWS Job No. 20-4532

ADDENDUM NO. 1
December 10, 2021

To Bidder of Record:

This addendum, applicable to work referenced above, is an amendment to the bidding documents and as such will be a part of and included in the Contract Documents. Acknowledge receipt of this addendum by entering the addendum number and issue date in the space provided in the submitted bid proposal.

CHANGES TO SPECIFICATIONS

- 1. Bid Proposal, BP-1 to BP-4 – Remove in its entirety and replace with the revised version attached to this Addendum. Respondents will utilize the attached Bid Proposal form in their submittals. Failure to use the revised bid proposal may result in the Contractor’s bid being found non-responsive and rejected.**

CHANGES TO THE PLANS

1. Remove the following sheets dated 11/11/21 and replace with the attached sheets dated 12/06/2021:
 - a. Sheet GEN-03 (3 of 76) Overall Quantities
 - b. Sheet H-03 (39 of 76) Site C-24 Sewer Rehabilitation Plan – OPEN CUT
 - c. Sheet M-04 (61 of 76) Site C-57 Sewer Rehabilitation Plan – PIPE BURST

CLARIFICATIONS

1. Bid Proposal, BP-1 to BP-4 – updated “Bid Proposal Signature Page” includes the following updates to the List of Bid Items:
 - a. Quantity for Line Item 9 Spec No. 401 Flowable Fill has increased.
 - b. Quantity for Line Item 40 Spec No. 848 8” (SDR 26) (ASTM D-2241) PVC Sanitary Sewer Pipe – 160 PSI – All Depth has increased.
 - c. Quantity for Line Item 41 Spec No. 848 8” (SDR 26) (ASTM D-3034) PVC Sanitary Sewer Pipe – All Depth has decreased.
2. Plan Sheet GEN-03 – Revised plan sheet includes updates to the Estimated Quantities per the updated List of Bid Items.
3. Sewer Rehabilitation Plan Sheet H-03 – Revised plan sheet specifies the 17 feet of PVC pipe to be utilized for open cut construction shall be ASTM D-2241.

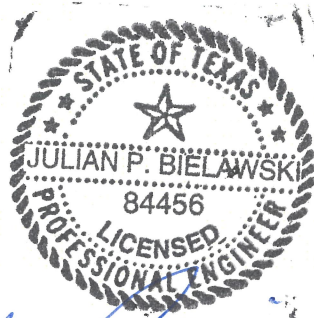
5. The estimated construction cost has increased from \$2,120,980.00 to \$2,121,720.00 and has been noted on the SAWS website.

END ADDENDUM 1

This Addendum, including these 2 pages, is 9 pages with attachments in its entirety.

Attachments:

- Bid Proposal Form (4 pages total)
- Plan Sheets GEN-03, H-03 and M-04 (3 pages total)



Julian P. Bielawski 12-6-21

Julian P. Bielawski
WESTON SOLUTIONS, INC.
Texas Registered Engineering Firm F-3123

BID PROPOSAL

PROPOSAL OF _____, a corporation
a partnership consisting of _____
an individual doing business as _____

THE SAN ANTONIO WATER SYSTEM:

Pursuant to Instructions and Invitation to Bidders, the undersigned proposes to furnish all labor and materials as specified and perform the work required for the project as specified, in accordance with the Plans and Specifications for the following prices in the bid proposal to wit:

PLEASE SEE ATTACHED LIST OF BID ITEMS.

BIDDER'S SIGNATURE & TITLE

FIRM'S NAME (TYPE OR PRINT)

FIRM'S ADDRESS

FIRM'S PHONE NO. /FAX NO.

FIRM'S EMAIL ADDRESS

The Contractor herein acknowledges receipt of the following: Addendum Nos. _____

OWNER RESERVES THE RIGHT TO ACCEPT THE OVERALL MOST RESPONSIBLE BID.

The bidder offers to construct the Project in accordance with the Contract Documents for the contract price, and to complete the Project within **360** calendar days after the start date, as set forth in the Authorization to Proceed. **The bidder understands and accepts the provisions of the contract Documents relating to liquidated damages of the project if not completed on time.**

Complete the additional requirements of the Bid Proposal which are included on the following pages.

Statement on President's Executive Orders

Has your firm previously performed work subject to the President's Executive Orders Numbers 11246 and 11375 or any preceding similar executive orders (Numbers 10925 and 11114)? Yes No

(1) Are you, Contractor, held or controlled by individuals who are citizens of China, Iran, North Korea, Russia or a country designated by the Governor of the State of Texas pursuant to Texas Government Code Chapter 2274? Yes No

(2) Are you, Contractor, held or controlled by a company or other entity, including a governmental entity, that is owned or controlled by citizens of or directly controlled by the government of China, Iran, North Korea, Russia or a country designated by the Governor of the State of Texas pursuant to Texas Government Code Chapter 2274? Yes No

(3) Are you, Contractor, headquartered in China, Iran, North Korea, Russia or a country designated by the Governor of the State of Texas pursuant to Texas Government Code Chapter 2274? Yes No



BPC West Sewershed Package 5B
SAWS Job No. 20-4532
Bid Proposal Line Items
December 2021

ITEM	PAY ITEM NO.	DESCRIPTION	UNIT	QTY	UNIT PRICE	SUBTOTAL
1	103.1	REMOVE CONCRETE CURB (COSA SPEC)	LF	366	\$	\$
2	103.3	REMOVE SIDEWALK AND DRIVEWAYS (COSA SPEC)	SF	150	\$	\$
3	200.1	FLEXIBLE BASE	CY	125	\$	\$
4	203.1	TACK COAT (COSA SPEC)	GAL	315	\$	\$
5	205.4	HOT MIX ASPHALT CONCRETE TYPE D (2" COMPACTED)(COSA SPEC)	SY	3,145	\$	\$
6	206.1	ASPHALT TREATED BASE (ATB) (10" COMPACTED DEPTH) (COSA SPEC)	SY	786	\$	\$
7	208.1	SALVAGING, HAULING & STOCKPILING RECLAIMABLE ASPHALT PAVEMENT (2" DEPTH) (COSA SPEC)	SY	2,606	\$	\$
8	230.2	CONCRETE PAVEMENT FULL-DEPTH REPAIR (8" COMPACTED DEPTH) (COSA SPEC)	SY	182	\$	\$
9	401	FLOWABLE FILL	CY	56	\$	\$
10	500.1	CONCRETE CURB (COSA SPEC)	LF	366	\$	\$
11	502.1	CONCRETE SIDEWALKS (CONVENTIONALLY FORMED)	SY	37	\$	\$
12	503.4	ASPHALTIC CONCRETE DRIVEWAY (COSA SPEC)	SY	22	\$	\$
13	516.1	SODDING	SY	86	\$	\$
14	530.7	BARRICADES, SIGNS, TRAFFIC HANDLING (SITE C-12)	LS	1	\$	\$
15	530.7	BARRICADES, SIGNS, TRAFFIC HANDLING (SITE C-18)	LS	1	\$	\$
16	530.7	BARRICADES, SIGNS, TRAFFIC HANDLING (SITE C-24)	LS	1	\$	\$
17	530.7	BARRICADES, SIGNS, TRAFFIC HANDLING (SITE C-26)	LS	1	\$	\$
18	530.7	BARRICADES, SIGNS, TRAFFIC HANDLING (SITE C-30)	LS	1	\$	\$
19	530.7	BARRICADES, SIGNS, TRAFFIC HANDLING (SITE C-40)	LS	1	\$	\$
20	530.7	BARRICADES, SIGNS, TRAFFIC HANDLING (SITE C-57)	LS	1	\$	\$
21	535.1	HOT APPLIED THERMOPLASTIC PAVEMENT MARKINGS (4-IN WIDE DOUBLE SOLID YELLOW LINE) (COSA SPEC)	LF	267	\$	\$
22	535.2	HOT APPLIED THERMOPLASTIC PAVEMENT MARKINGS (4-IN WIDE WHITE LINE) (COSA SPEC)	LF	40	\$	\$
23	535.7	24 INCH WIDE WHITE LINE	LF	62	\$	\$
24	537.8	PAVEMENT MARKER (TYPE II-A-A)	EA	16	\$	\$
25	550	TRENCH EXCAVATION SAFETY PROTECTION	LF	1,244	\$	\$
26	818	WATER PIPE INSTALLATION 6" PVC (C-900 AND C-909)	LF	86	\$	\$
27	822	CUSTOMER'S YARD PIPING	EA	2	\$	\$
28	824	RELAY 3/4" SHORT SERVICE	EA	2	\$	\$
29	836	GREY IRON AND DUCTILE-IRON FITTINGS	TON	0.15	\$	\$
30	840	WATER TIE-INS	EA	2	\$	\$
31	841	HYDROSTATIC TESTING	EA	1	\$	\$
32	844	2" BLOWOFF, TEMPORARY	EA	1	\$	\$
33	845.1	REMOVE AND REPLACE FENCING (4' HIGH CHAIN LINK)	LF	379	\$	\$
34	SS1	REMOVE AND REPLACE FENCING (6' HIGH WOOD)	LF	369	\$	\$
35	845.1	REMOVE AND REPLACE FENCING (6' HIGH METAL PANELING)	LF	35	\$	\$
36	845.1	REMOVE AND REPLACE FENCING (4' HIGH WROUGHT IRON)	LF	32	\$	\$
37	845.1	REMOVE AND REPLACE FENCING (6' HIGH CHAIN LINK)	LF	60	\$	\$
38	845.1	REMOVE AND REPLACE FENCING (8' HIGH CHAIN LINK)	LF	50	\$	\$
39	848	8" IPS DR17 HDPE SANITARY SEWER PIPE - ALL DEPTH	LF	7	\$	\$
40	848	8" (SDR-26) (ASTM D-2241) PVC SANITARY SEWER PIPE - 160 PSI - ALL DEPTH	LF	396	\$	\$



BPC West Sewershed Package 5B
SAWS Job No. 20-4532
Bid Proposal Line Items
December 2021

ITEM	PAY ITEM NO.	DESCRIPTION	UNIT	QTY	UNIT PRICE	SUBTOTAL
41	848	8" (SDR-26) (ASTM D-3034) PVC SANITARY SEWER PIPE - ALL DEPTH	LF	497	\$	\$
42	848	10" (SDR-26) (ASTM D-3034) PVC SANITARY SEWER PIPE - ALL DEPTH	LF	13	\$	\$
43	851	EXISTING MANHOLE ADJUSTMENTS (WITH NEW RING AND WATERTIGHT COVER)	EA	17	\$	\$
44	852.6.1	SANITARY SEWER MANHOLE (0' - 6'), 4' DIA.	EA	13	\$	\$
45	852.6.1	SANITARY SEWER MANHOLE (0' - 6'), 5' DIA.	EA	1	\$	\$
46	852.6.1	SANITARY SEWER DROP MANHOLE (0' - 6'), 4' DIA.	EA	2	\$	\$
47	852.6.1	SANITARY SEWER DOGHOUSE MANHOLE (0' - 6'), 4' DIA.	EA	1	\$	\$
48	852.6.2	EXTRA DEPTH SANITARY SEWER MANHOLE (> 6'), 4' DIA.	VF	58	\$	\$
49	852.6.2	EXTRA DEPTH SANITARY SEWER MANHOLE (> 6'), 5' DIA.	VF	13	\$	\$
50	852.6.2	EXTRA DEPTH SANITARY SEWER DROP MANHOLE (> 6'), 4' DIA.	VF	15	\$	\$
51	852.6.2	EXTRA DEPTH SANITARY SEWER DOGHOUSE MANHOLE (> 6'), 4' DIA.	VF	1	\$	\$
52	854	SANITARY SEWER LATERAL	LF	258	\$	\$
53	854.1	CLEANOUT (TWO-WAY) FOR SANITARY SEWER LATERAL	EA	15	\$	\$
54	855.1	CLEANOUT (ONE-WAY) FOR SANITARY SEWER LATERAL	EA	2	\$	\$
55	855	RECONSTRUCTION OF EXISTING MANHOLES	EA	9	\$	\$
56	856.1	CARRIER PIPE FOR JACKING, BORING OR TUNNELING (18" HDPE [D.I.P.S.], 111 PSI)	LF	403	\$	\$
57	856.2	CASING OR LINER (30" STEEL PIPE)	LF	386	\$	\$
58	860	VERTICAL STACKS	VF	63	\$	\$
59	862.1	ABANDONMENT OF SANITARY SEWER MAIN (15" DIA.)	LF	410	\$	\$
60	862.1	ABANDONMENT OF SANITARY SEWER MAIN (8" DIA.)	LF	300	\$	\$
61	862.2	ABANDONMENT OF SANITARY SEWER MANHOLES/STRUCTURES (4' DIA.)	EA	1	\$	\$
62	864	BYPASS PUMPING (LARGE DIAMETER SANITARY SEWER) SITE C-42	LS	1	\$	\$
63	865	BYPASS PUMPING (SMALL DIAMETER SANITARY SEWERS) SITE C-4	LS	1	\$	\$
64	865	BYPASS PUMPING (SMALL DIAMETER SANITARY SEWERS) SITE C-11	LS	1	\$	\$
65	865	BYPASS PUMPING (SMALL DIAMETER SANITARY SEWERS) SITE C-12	LS	1	\$	\$
66	865	BYPASS PUMPING (SMALL DIAMETER SANITARY SEWERS) SITE C-16	LS	1	\$	\$
67	865	BYPASS PUMPING (SMALL DIAMETER SANITARY SEWERS) SITE C-17	LS	1	\$	\$
68	865	BYPASS PUMPING (SMALL DIAMETER SANITARY SEWERS) SITE C-18A & C-18B	LS	1	\$	\$
69	865	BYPASS PUMPING (SMALL DIAMETER SANITARY SEWERS) SITE C-21B	LS	1	\$	\$
70	865	BYPASS PUMPING (SMALL DIAMETER SANITARY SEWERS) SITE C-24	LS	1	\$	\$
71	865	BYPASS PUMPING (SMALL DIAMETER SANITARY SEWERS) SITE C-26	LS	1	\$	\$
72	865	BYPASS PUMPING (SMALL DIAMETER SANITARY SEWERS) SITE C-30	LS	1	\$	\$
73	865	BYPASS PUMPING (SMALL DIAMETER SANITARY SEWERS) SITE C-40	LS	1	\$	\$
74	865	BYPASS PUMPING (SMALL DIAMETER SANITARY SEWERS) SITE C-42	LS	1	\$	\$
75	865	BYPASS PUMPING (SMALL DIAMETER SANITARY SEWERS) SITE C-57	LS	1	\$	\$
76	866	SANITARY SEWER MAIN TELEVISION PRE INSPECTION (8" - 15") WITH CLEANING	LF	4,898	\$	\$
77	866	SEWER MAIN TELEVISION INSPECTION (27" AND LARGER) WITH CLEANING AND PRE INSPECTION	LF	579	\$	\$
78	866	SANITARY SEWER MAIN TELEVISION POST INSPECTION (8" - 15")	LF	1,338	\$	\$
79	900.1	REHABILITATION OF SANITARY SEWER BY PIPE BURST, 8" DIA. IPS DR17 HDPE PIPE- ALL DEPTH	LF	2,729	\$	\$
80	900.1	REHABILITATION OF SANITARY SEWER BY PIPE BURST, 27" DIA. IPS DR17 HDPE PIPE- ALL DEPTH	LF	579	\$	\$



BPC West Sewershed Package 5B
SAWS Job No. 20-4532
Bid Proposal Line Items
December 2021


ITEM	PAY ITEM NO.	DESCRIPTION	UNIT	QTY	UNIT PRICE	SUBTOTAL
81	901.1	REHABILITATION OF SANITARY SEWER BY CURED-IN-PLACE PIPE (HOT WATER), 8" DIA. PIPE- ALL DEPTH	LF	365	\$	\$
82	901.1	REHABILITATION OF SANITARY SEWER BY CURED-IN-PLACE PIPE (HOT WATER), 10" DIA. PIPE- ALL DEPTH	LF	286	\$	\$
83	910.1	MANHOLE REHABILITATION (STANDARD MANHOLES 4' DIA.)	VF	108	\$	\$
84	910.2	SEWER STRUCTURE REHABILITATION (NONCIRCULAR MANHOLES, AND MANHOLES GREATER THAN 4' DIA.)	SF	541	\$	\$
85	1103	SECTIONAL CIPP POINT REPAIRS (UP to 9 LF) - 8" DIA. - ALL DEPTH	EA	1	\$	\$
86	1103	POINT REPAIRS (UP to 9 LF) - 8" DIA. - ALL DEPTH	EA	3	\$	\$
87	1103	POINT REPAIRS (UP to 9 LF) - 10" DIA. - ALL DEPTH	EA	1	\$	\$
88	1103	POINT REPAIRS LONGER THAN 9 LF - ALL DEPTH	LF	11	\$	\$
89	1103	SECTIONAL CIPP POINT REPAIR LONGER THAN 9 LF - ALL DEPTH	LF	4	\$	\$
90	1103.5	OBSTRUCTION REMOVAL - 18" OR SMALLER DIA. - REMOTE CONTROL - ALL DEPTH	EA	2	\$	\$
91	1109.1	SANITARY SEWER LATERAL RECONNECTIONS - OPEN CUT EXCAVATION - ALL DEPTH	EA	33	\$	\$
92	1109.1	SANITARY SEWER LATERAL RECONNECTIONS - REMOTE CONTROL DEVICE - ALL DEPTH	EA	6	\$	\$
93	6001	PORTABLE CHANGEABLE MESSAGE SIGN (TXDOT SPEC.)	EA	2	\$	\$
94	SS 01380	PRE - AND POST - CONSTRUCTION INSPECTION AND VIDEO DOCUMENTATION	LS	1	\$	\$
95	SS 02400	TRENCHLESS CROSSING BY GUIDED BORING OR MICROTUNNELING	LF	386	\$	\$
96	SS 3300	SANITARY SEWER PRIVATE LATERAL (4"-6") (INCLUDING COSA PERMIT AND LICENSED PLUMBER)	LF	600	\$	\$
97	SC3	CPS ENERGY ALLOWANCE	ALW	1	\$ 15,000.00	\$ 15,000.00
Subtotal (Items 1-97)						
98	100	MOBILIZATION (MAX 10% OF ITEMS 1 TO 96)	LS	1.00	\$	
99	101	PREPARING RIGHT-OF-WAY (MAX 5% OF ITEMS 1 TO 96)	LS	1.00	\$	
Mobilization and Prep ROW shall be limited to the maximum percentage shown. If the percentage exceeds the allowable maximum stated for the mobilization and/or preparation of ROW, SAWS reserves the right to cap the amount at the percentages shown and adjust the extension of the bid items accordingly.						
TOTAL BID PRICE (TO INCLUDE LINE ITEMS 1-97 AND 98-99)						\$

\\nasrv1\etx_data\Share\BPC West Sewer\Package 5\07.0 Design Engineering\CAD
 Y:\BPC West Sewer\Package 5\07.0 Design Engineering\CAD\Production Drawings\101 - FB\10412.025.001.0003-101-1-1-1.dwg Dec 06.2021 - 4:30pm altheeya

ESTIMATED QUANTITIES				
ITEM NO.	SPEC. NO.	DESCRIPTION	UNIT	Total
1	103.1	REMOVE CONCRETE CURB (COSA SPEC)	LF	366
2	103.3	REMOVE SIDEWALK AND DRIVEWAYS (COSA SPEC)	SF	150
3	200.1	FLEXIBLE BASE	CY	125
4	203.1	TACK COAT (COSA SPEC)	GAL	315
5	205.4	HOT MIX ASPHALT CONCRETE TYPE D (2" COMPACTED)(COSA SPEC)	SY	3145
6	206.1	ASPHALT TREATED BASE (ATB) (10" COMPACTED DEPTH) (COSA SPEC)	SY	786
7	208.1	SALVAGING, HAULING & STOCKPILING RECLAIMABLE ASPHALT PAVEMENT (2" DEPTH) (COSA SPEC)	SY	2606
8	230.2	CONCRETE PAVEMENT FULL-DEPTH REPAIR (8" COMPACTED DEPTH) (COSA SPEC)	SY	182
9	401	FLOWABLE FILL	CY	56
10	500.1	CONCRETE CURB (COSA SPEC)	LF	366
11	502.1	CONCRETE SIDEWALKS (CONVENTIONALLY FORMED)	SY	37
12	503.4	ASPHALTIC CONCRETE DRIVEWAY (COSA SPEC)	SY	22
13	516.1	SODDING	SY	86
14	530.7	BARRICADES, SIGNS, TRAFFIC HANDLING (SITE C-12)	LS	1
15	530.7	BARRICADES, SIGNS, TRAFFIC HANDLING (SITE C-18)	LS	1
16	530.7	BARRICADES, SIGNS, TRAFFIC HANDLING (SITE C-24)	LS	1
17	530.7	BARRICADES, SIGNS, TRAFFIC HANDLING (SITE C-26)	LS	1
18	530.7	BARRICADES, SIGNS, TRAFFIC HANDLING (SITE C-30)	LS	1
19	530.7	BARRICADES, SIGNS, TRAFFIC HANDLING (SITE C-40)	LS	1
20	530.7	BARRICADES, SIGNS, TRAFFIC HANDLING (SITE C-57)	LS	1
21	535.1	HOT APPLIED THERMOPLASTIC PAVEMENT MARKINGS (4-IN WIDE DOUBLE SOLID YELLOW LINE) (COSA SPEC)	LF	267
22	535.2	HOT APPLIED THERMOPLASTIC PAVEMENT MARKINGS (4-IN WIDE WHITE LINE) (COSA SPEC)	LF	40
23	535.7	24 INCH WIDE WHITE LINE	LF	62
24	537.8	PAVEMENT MARKER (TYPE II-A-A)	EA	16
25	550	TRENCH EXCAVATION SAFETY PROTECTION	LF	1244
26	818	WATER PIPE INSTALLATION 6" PVC (C-900 AND C-909)	LF	86
27	822	CUSTOMER'S YARD PIPING	EA	2
28	824	RELAY 3/4" SHORT SERVICE	EA	2
29	836	GREY IRON AND DUCTILE-IRON FITTINGS	TON	0.15
30	840	WATER TIE-INS	EA	2
31	841	HYDROSTATIC TESTING	EA	1
32	844	2" BLOWOFF, TEMPORARY	EA	1
33	845.1	REMOVE AND REPLACE FENCING (4' HIGH CHAIN LINK)	LF	379
34	551	REMOVE AND REPLACE FENCING (6' HIGH WOOD)	LF	369
35	845.1	REMOVE AND REPLACE FENCING (6' HIGH METAL PANELING)	LF	35
36	845.1	REMOVE AND REPLACE FENCING (4' HIGH WROUGHT IRON)	LF	32
37	845.1	REMOVE AND REPLACE FENCING (6' HIGH CHAIN LINK)	LF	60
38	845.1	REMOVE AND REPLACE FENCING (8' HIGH CHAIN LINK)	LF	50
39	848	8" IPS DR17 HDPE SANITARY SEWER PIPE - ALL DEPTH	LF	7
40	848	8" (SDR-26) (ASTM D-2241) PVC SANITARY SEWER PIPE - 160 PSI - ALL DEPTH	LF	396
41	848	8" (SDR-26) (ASTM D-3034) PVC SANITARY SEWER PIPE - ALL DEPTH	LF	497
42	848	10" (SDR-26) (ASTM D-3034) PVC SANITARY SEWER PIPE - ALL DEPTH	LF	13
43	851	EXISTING MANHOLE ADJUSTMENTS (WITH NEW RING AND WATERTIGHT COVER)	EA	17
44	852.6.1	SANITARY SEWER MANHOLE (0' - 6'), 4' DIA.	EA	13
45	852.6.1	SANITARY SEWER MANHOLE (0' - 6'), 5' DIA.	EA	1
46	852.6.1	SANITARY SEWER DROP MANHOLE (0' - 6'), 4' DIA.	EA	2
47	852.6.1	SANITARY SEWER DOGHOUSE MANHOLE (0' - 6'), 4' DIA.	EA	1
48	852.6.2	EXTRA DEPTH SANITARY SEWER MANHOLE (> 6'), 4' DIA.	VF	57.5
49	852.6.2	EXTRA DEPTH SANITARY SEWER MANHOLE (> 6'), 5' DIA.	VF	13
50	852.6.2	EXTRA DEPTH SANITARY SEWER DROP MANHOLE (> 6'), 4' DIA.	VF	14.5
51	852.6.2	EXTRA DEPTH SANITARY SEWER DOGHOUSE MANHOLE (> 6'), 4' DIA.	VF	1
52	854	SANITARY SEWER LATERAL	LF	258
53	854.1	CLEANOUT (TWO-WAY) FOR SANITARY SEWER LATERAL	EA	15
54	855.1	CLEANOUT (ONE-WAY) FOR SANITARY SEWER LATERAL	EA	2
55	855	RECONSTRUCTION OF EXISTING MANHOLES	EA	9
56	856.1	CARRIER PIPE FOR JACKING, BORING OR TUNNELING (18" HDPE [D.I.P.S.], 111 PSI)	LF	403
57	856.2	CASING OR LINER (30" STEEL PIPE)	LF	386
58	860	VERTICAL STACKS	VF	63
59	862.1	ABANDONMENT OF SANITARY SEWER MAIN (15" DIA.)	LF	410
60	862.1	ABANDONMENT OF SANITARY SEWER MAIN (8" DIA.)	LF	300
61	862.2	ABANDONMENT OF SANITARY SEWER MANHOLES/STRUCTURES (4' DIA.)	EA	1
62	864	BYPASS PUMPING (LARGE DIAMETER SANITARY SEWER) SITE C-42	LS	1
63	865	BYPASS PUMPING (SMALL DIAMETER SANITARY SEWERS) SITE C-4	LS	1
64	865	BYPASS PUMPING (SMALL DIAMETER SANITARY SEWERS) SITE C-11	LS	1
65	865	BYPASS PUMPING (SMALL DIAMETER SANITARY SEWERS) SITE C-12	LS	1
66	865	BYPASS PUMPING (SMALL DIAMETER SANITARY SEWERS) SITE C-16	LS	1
67	865	BYPASS PUMPING (SMALL DIAMETER SANITARY SEWERS) SITE C-17	LS	1

68	865	BYPASS PUMPING (SMALL DIAMETER SANITARY SEWERS) SITE C-18A & C-18B	LS	1
69	865	BYPASS PUMPING (SMALL DIAMETER SANITARY SEWERS) SITE C-21B	LS	1
70	865	BYPASS PUMPING (SMALL DIAMETER SANITARY SEWERS) SITE C-24	LS	1
71	865	BYPASS PUMPING (SMALL DIAMETER SANITARY SEWERS) SITE C-26	LS	1
72	865	BYPASS PUMPING (SMALL DIAMETER SANITARY SEWERS) SITE C-30	LS	1
73	865	BYPASS PUMPING (SMALL DIAMETER SANITARY SEWERS) SITE C-40	LS	1
74	865	BYPASS PUMPING (SMALL DIAMETER SANITARY SEWERS) SITE C-42	LS	1
75	865	BYPASS PUMPING (SMALL DIAMETER SANITARY SEWERS) SITE C-57	LS	1
76	866	SANITARY SEWER MAIN TELEVISION PRE INSPECTION (8" - 15") WITH CLEANING	LF	4898
77	866	SEWER MAIN TELEVISION INSPECTION (27" AND LARGER) WITH CLEANING AND PRE INSPECTION	LF	579
78	866	SANITARY SEWER MAIN TELEVISION POST INSPECTION (8" - 15")	LF	1338
79	900.1	REHABILITATION OF SANITARY SEWER BY PIPE BURST, 8" DIA. IPS DR17 HDPE PIPE- ALL DEPTH	LF	2729
80	900.1	REHABILITATION OF SANITARY SEWER BY PIPE BURST, 27" DIA. IPS DR17 HDPE PIPE- ALL DEPTH	LF	579
81	901.1	REHABILITATION OF SANITARY SEWER BY CURED-IN-PLACE PIPE (HOT WATER), 8" DIA. PIPE- ALL DEPTH	LF	365
82	901.1	REHABILITATION OF SANITARY SEWER BY CURED-IN-PLACE PIPE (HOT WATER), 10" DIA. PIPE- ALL DEPTH	LF	286
83	910.1	MANHOLE REHABILITATION (STANDARD MANHOLES 4' DIA.)	VF	107.52
84	910.2	SEWER STRUCTURE REHABILITATION (NONCIRCULAR MANHOLES, AND MANHOLES GREATER THAN 4' DIA.)	SF	541
85	1103	SECTIONAL CIPP POINT REPAIRS (UP TO 9 LF) - 8" DIA. - ALL DEPTH	EA	1
86	1103	POINT REPAIRS (UP TO 9 LF) - 8" DIA. - ALL DEPTH	EA	3
87	1103	POINT REPAIRS (UP TO 9 LF) - 10" DIA. - ALL DEPTH	EA	1
88	1103	POINT REPAIRS LONGER THAN 9 LF - ALL DEPTH	LF	11
89	1103	SECTIONAL POINT REPAIR LONGER THAN 9 LF - 8" DIA. - ALL DEPTH	LF	4
90	1103.5	OBSTRUCTION REMOVAL - 18" OR SMALLER DIA. - REMOTE CONTROL - ALL DEPTH	EA	2
91	1109.1	SANITARY SEWER LATERAL RECONNECTIONS - OPEN CUT EXCAVATION - ALL DEPTH	EA	33
92	1109.1	SANITARY SEWER LATERAL RECONNECTIONS - REMOTE CONTROL DEVICE - ALL DEPTH	EA	6
93	6001	PORTABLE CHANGEABLE MESSAGE SIGN (TXDOT SPEC.)	EA	2
94	SS 01380	PRE - AND POST - CONSTRUCTION INSPECTION AND VIDEO DOCUMENTATION	LS	1
95	SS 02400	TRENCHLESS CROSSING BY GUIDED BORING OR MICROTUNNELING	LF	386
96	SS 3300	SANITARY SEWER PRIVATE LATERAL (4"-6") (INCLUDING COSA PERMIT AND LICENSED PLUMBER)	LF	600
97	SC3	CPS ENERGY ALLOWANCE	ALW	1
98	100	MOBILIZATION (MAX 10% OF ITEMS 1 TO 96)	LS	1
99	101	PREPARING RIGHT-OF-WAY (MAX 5% OF ITEMS 1 TO 96)	LS	1

REVISION DESCRIPTION		
NO.	BY	DATE
1	JB	12/06/21
ADDENDUM 1		



WESTON SOLUTIONS, INC.
 70 NE LOOP 410, SUITE 600
 SAN ANTONIO, TEXAS 78216-5842

BPC WEST SEWER SHED PACKAGE 5B
 OVERALL QUANTITIES

San Antonio Water System

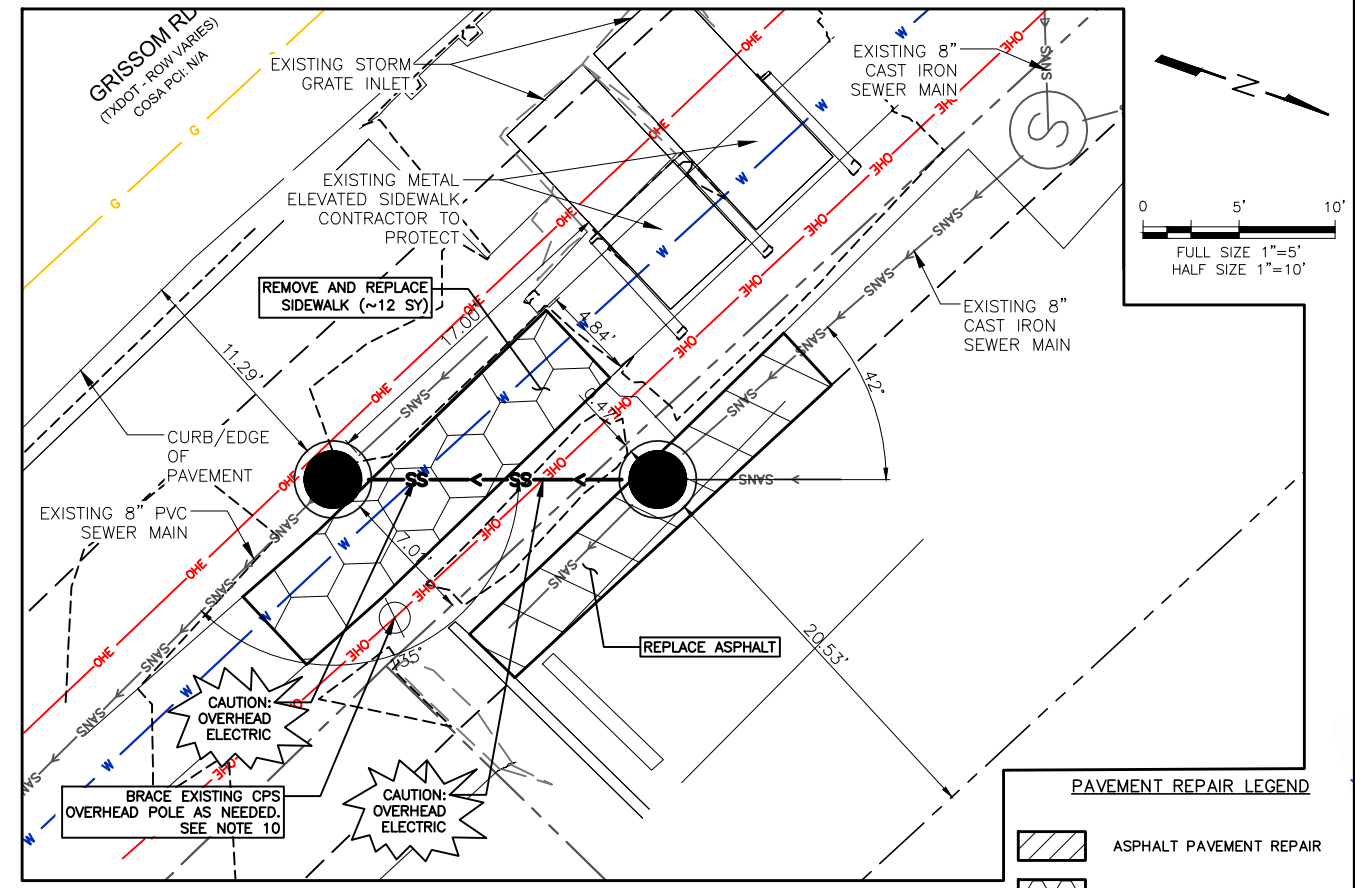
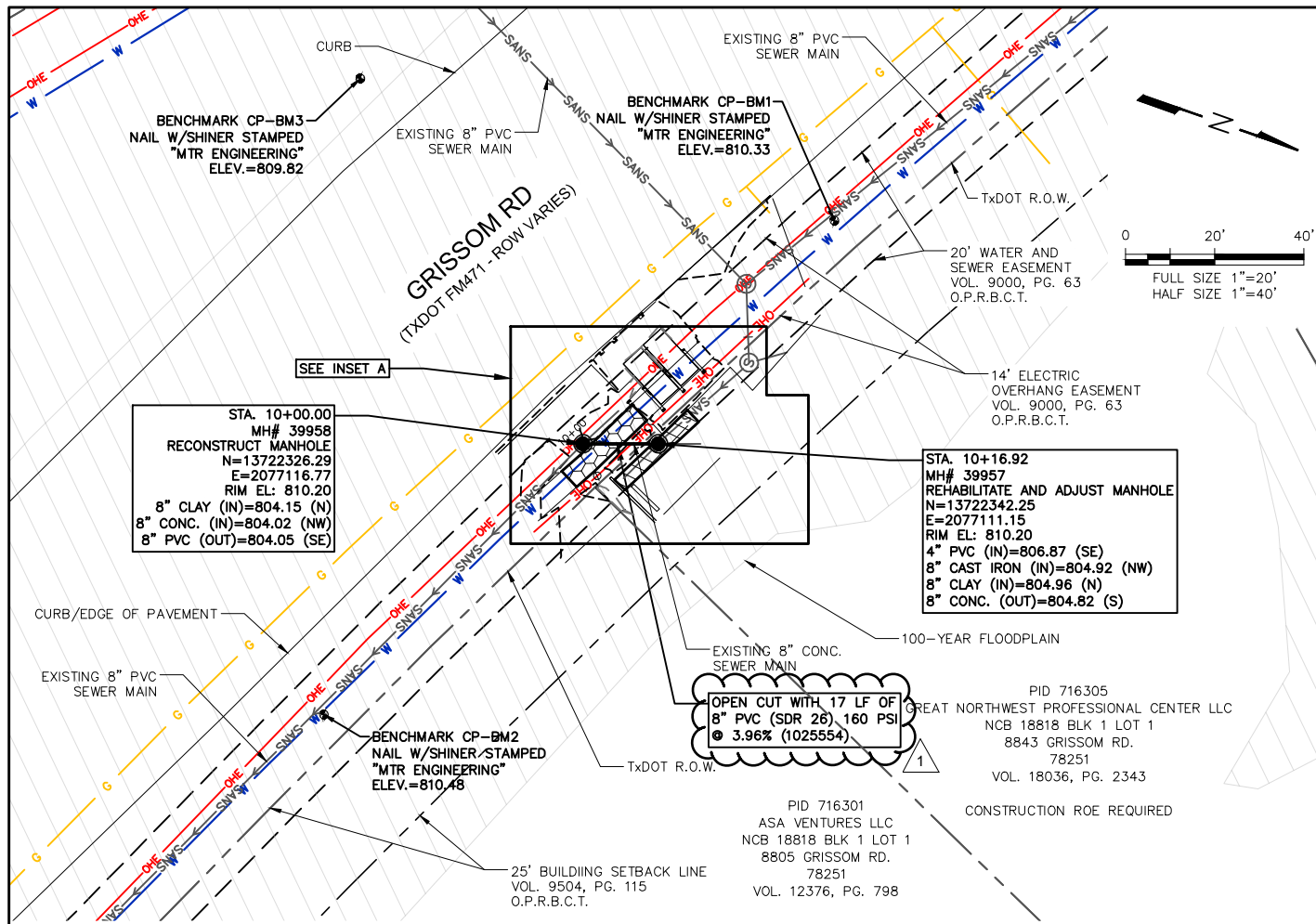
SAWS

JOB NO. 20-4504

NOTES	INITIALS	DATE
DESIGNED BY	RK	11/21
REVIEWED BY	JB	11/21

SCALE: AS SHOWN

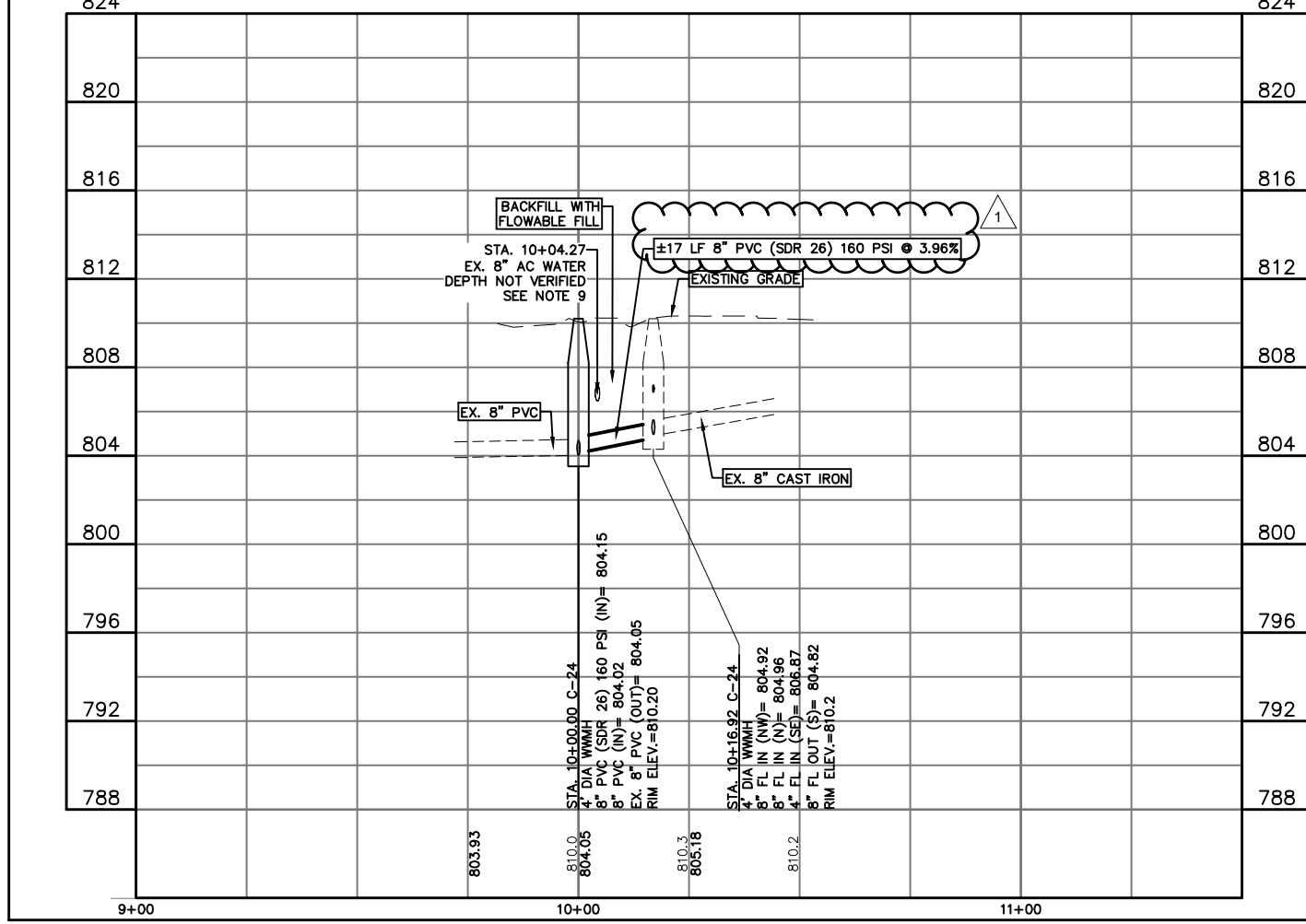
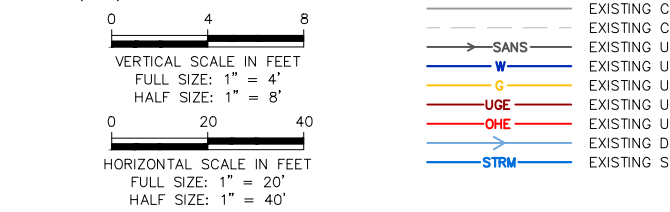
SHEET NO. GEN-03
 03 OF 76



BM	NORTHING	EASTING	ELEVATION	DESCRIPTION
CP-BM1	13,722,362.87	2,077,050.82	810.33	NAIL W/SHINER STAMPED "MTR ENGINEERING"
CP-BM2	13,722,291.63	2,077,193.33	810.48	NAIL W/SHINER STAMPED "MTR ENGINEERING"
CP-BM3	13,722,251.97	2,077,056.06	809.82	NAIL W/SHINER STAMPED "MTR ENGINEERING"

ITEM	DESCRIPTION	UNIT	QUANTITY
203.1	TACK COAT	GAL	1
205.4	HOT MIX ASPHALT CONCRETE PAVEMENT TYPE D (2" COMPACTED)	SY	9
206.1	ASPHALT TREATED BASE (ATB) (10" COMPACTED DEPTH)	SY	6
413.1	FLOWABLE FILL	CY	12
502.1	CONCRETE SIDEWALKS - CONVENTIONALLY FORMED	SY	12
530.7	BARRICADES, SIGNS, TRAFFIC HANDLING (SITE C-24)	LS	1
535.2	HOT APPLIED THERMOPLASTIC PAVEMENT MARKINGS (4 INCH WIDE WHITE LINE)	LF	40
550	PRELIMINARY EXCAVATION SAFETY PROTECTION	LF	17
848	8" (ASTM D2241) PVC SANITARY SEWER PIPE (ALL DEPTH)	LF	17
851	EXISTING MANHOLE AND ACCESS	EA	1
855	RECONSTRUCTION OF EXISTING MANHOLES	EA	1
865	BYPASS PUMPING SMALL DIAMETER SANITARY SEWERS (SITE C-24)	LS	1
866	SANITARY SEWER MAIN TELEVISION PRE INSPECTION (8"-15") WITH CLEANING	LF	17
866	SANITARY SEWER MAIN TELEVISION POST INSPECTION (8"-15")	LF	17
910.1	MANHOLE REHABILITATION (STANDARD MANHOLES 4' DIA.)	VF	6
6001	PORTABLE CHANGEABLE MESSAGE SIGN (TXDOT SPEC.)	EA	1

- NOTES:
- THE EXISTING UTILITIES THAT ARE BEING SHOWN IN THE PLANS ARE TAKEN FROM BEST AVAILABLE DATA. BEFORE COMMENCING CONSTRUCTION, THE CONTRACTOR SHALL FIELD VERIFY ALL UTILITY CROSSINGS, ELEVATIONS, AND LOCATIONS. ANY UTILITY DISCREPANCY SHALL BE REPORTED TO THE DESIGN ENGINEER.
 - CONTRACTOR SHALL EXECUTE CAUTION WHEN EXCAVATING AROUND EXISTING UTILITIES. ALL GAS SERVICE LINE CROSSINGS MUST BE EXPOSED FOR OBSERVATION DURING PIPE BURSTING OPERATIONS.
 - CONTRACTOR TO AVOID DISTURBING EXISTING STORM STRUCTURE.
 - FLOOD PLAIN DEVELOPMENT PERMIT SHALL BE OBTAINED BY SAWS BEFORE COMMENCING CONSTRUCTION. CONTRACTOR SHALL ENSURE THE PERMIT REQUIREMENTS ARE MET DURING CONSTRUCTION.
 - CONTRACTOR SHALL COORDINATE WITH GREAT NORTHWEST ANIMAL HOSPITAL A MINIMUM OF TWO (2) WEEKS PRIOR TO CONSTRUCTION.
GREAT NORTHWEST ANIMAL HOSPITAL: (210) 681-4278
 - WORK SHALL BE COMPLETED OUTSIDE OF THE HOSPITAL'S NORMAL WORKING HOURS (MONDAY-FRIDAY: 7:00 AM-6:00 PM AND SATURDAY: 8:00 AM-12:00 PM) TO MINIMIZE DISRUPTIONS. AN OFF-DUTY OFFICER SHALL BE PROVIDED, FOR NIGHT WORK, TO PROVIDE AWARENESS OF CONSTRUCTION ZONE AHEAD.
 - CONTRACTOR SHALL BACKFILL THE TRENCH AND AROUND MANHOLES WITH FLOWABLE FILL UP TO 2' BELOW EXISTING SURFACE PER SPEC. 413.1.
 - CONTRACTOR SHALL USE CAUTION WHILE EXCAVATING TO NOT DISTURB EXISTING AC WATER PIPE.
 - SPECIAL NOTE FOR A.C. EXPOSURE: ASBESTOS CEMENT (A.C.) PIPE, ALSO KNOWN AS TRANSITE PIPE AND WHICH IS KNOWN TO OBTAIN ASBESTOS CONTAINING MATERIAL (ACM), IS LOCATED WITHIN THE PROJECT LIMITS. SPECIAL WASTE MANAGEMENT PROCEDURES AND HEALTH AND SAFETY REQUIREMENTS WILL BE APPLICABLE WHEN REMOVAL AND/OR DISTURBANCE OF THIS PIPE OCCUR. A.C. PIPE EXPOSURE SHALL BE DONE ACCORDING TO SPECIFICATION ITEM NO. 3000, "HANDLING ASBESTOS CEMENT PIPE." (NSPI).



NO.	BY	DATE	REVISION DESCRIPTION
1	BA	12/06/21	ADDENDUM #1

100 NE Loop 410, Suite 1090
San Antonio, Texas 78216
TBPE #F-14629

garza

San Antonio Water System

JOB NO. 20-4504

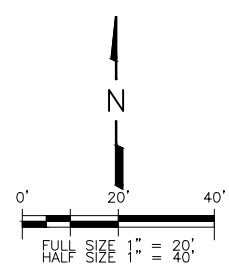
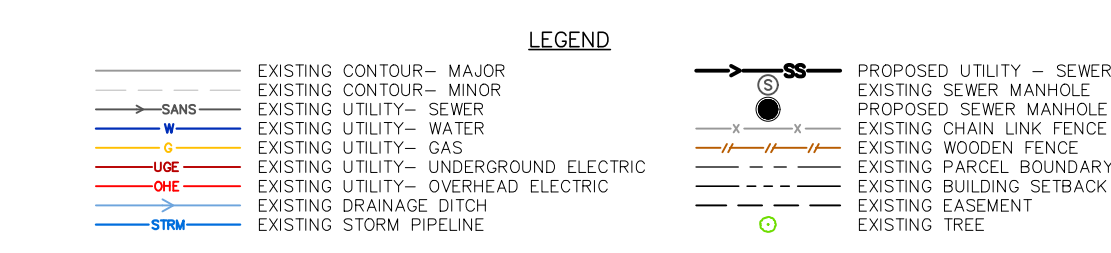
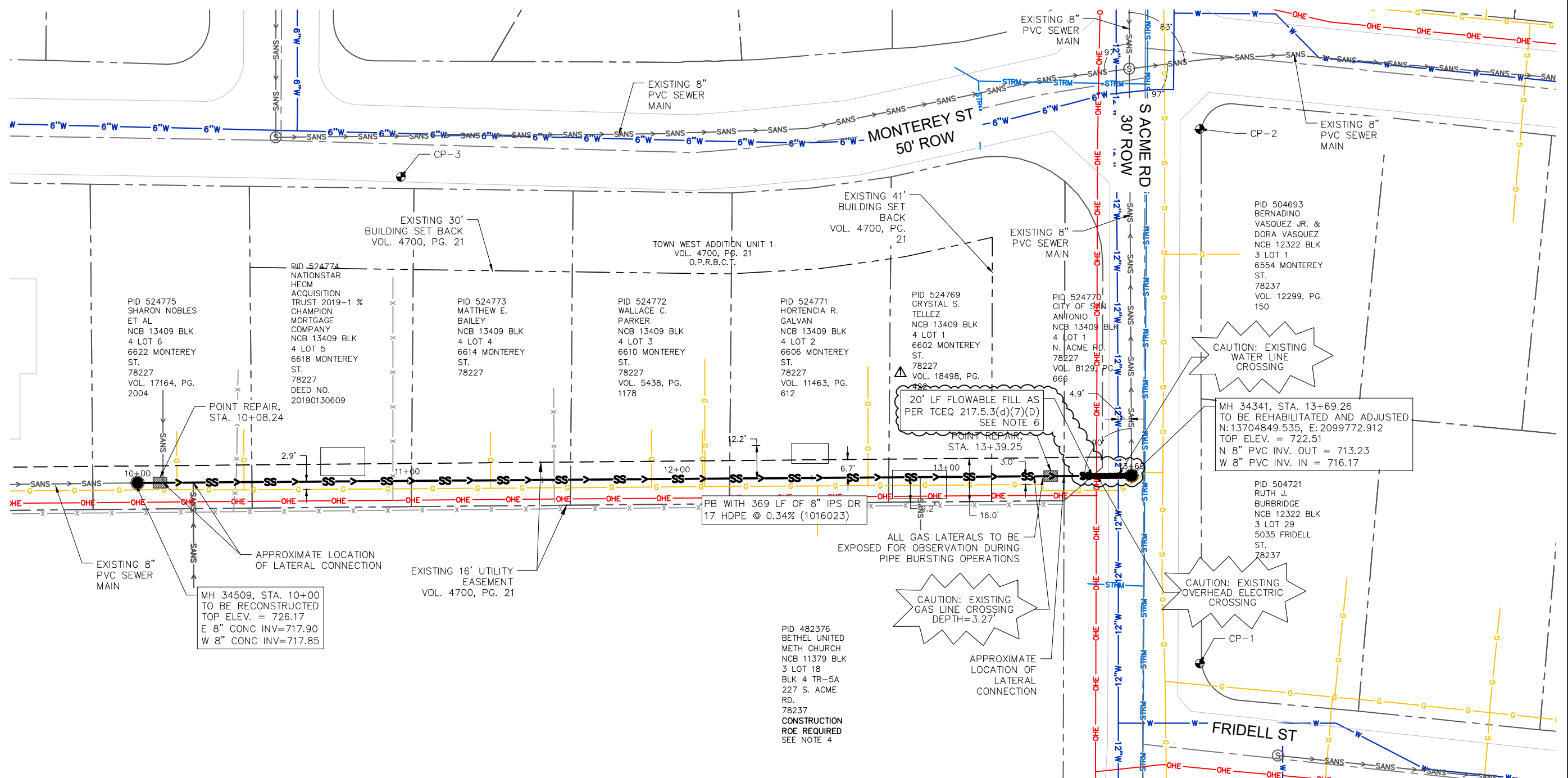
NOTES	INITIALS	DATE
DESIGNED BY		
REVIEWED BY		

SCALE:

SHEET NO. H-03
39 OF 76

G:\113620-00005\Civil\00-CAD\113620-00005-REHAB.dwg Dec 07, 2021 - 6:01pm bliason

\\nasstx1\etc_data\Shared\SANS\BPC West Sewer\Package 5\07.0 Design Engineering\CAD\Production Drawings\101 - PB\10412.025.001.0003-1116.dwg Dec 06.2021 - 4:00pm talamano
 \\nasstx1\etc_data\Shared\SANS\BPC West Sewer\Package 5\07.0 Design Engineering\CAD\Production Drawings\101 - PB\10412.025.001.0003-1116.dwg Dec 06.2021 - 4:00pm talamano



- NOTES:**
1. THE EXISTING UTILITIES THAT ARE BEING SHOWN IN THE PLANS ARE TAKEN FROM BEST AVAILABLE DATA. BEFORE COMMENCING CONSTRUCTION, THE CONTRACTOR SHALL FIELD VERIFY ALL UTILITY CROSSINGS, ELEVATIONS, AND LOCATIONS. ANY UTILITY DISCREPANCY SHALL BE REPORTED TO THE DESIGN ENGINEER.
 2. CONTRACTOR SHALL EXECUTE CAUTION WHEN EXCAVATING AROUND EXISTING UTILITIES.
 3. GAS AND WATER CROSSINGS SHALL BE EXPOSED FOR OBSERVATION DURING PIPE BURSTING OPERATIONS.
 4. CONTRACTOR SHALL PROVIDE NOT LESS THAN 2 WEEKS NOTICE TO BETHEL UNITED METHODIST CHURCH BEFORE ENTERING PROPERTY. REFER TO ROE AGREEMENTS FOR PROPERTY OWNER'S CONTACT INFORMATION AND SPECIFIED WORK AND ACCESS AREA LIMITS.
 5. CONTRACTOR SHALL NOTIFY PROPERTY OWNERS A MINIMUM OF TWO (2) WEEKS PRIOR TO ACCESSING THE EASEMENT WITHIN THE OWNERS' PROPERTIES. ALL PIPE BURSTING OPERATIONS SHALL OCCUR WITHIN THE 16' UTILITY EASEMENT.
 6. EXCAVATION, BACKFILL, HAULING EXCAVATED MATERIAL AND OTHER NECESSARY WORK TO COMPLETE FLOWABLE FILL FILL POUR IS CONSIDERED SUBSIDIARY TO THE FLOWABLE FILL ITEM.

COSA PCI
 MONTEREY (E): 77.66
 MONTEREY (W): 64.38
 S ACME RD: 99.31
 FRIDELL ST: 68.60
 (TO BE VERIFIED BY COSA)

ESTIMATED QUANTITIES			
ITEM NO.	DESCRIPTION	UNIT	QUANTITY
401	FLOWABLE FILL	CY	2
516.1	SODDING	SY	3
530.7	BARRICADES, SIGNS, TRAFFIC HANDLING (SITE C-57)	LS	1
550	TRENCH EXCAVATION SAFETY PROTECTION	LF	15
845.1	REMOVE AND REPLACE FENCING (4' HIGH CHAIN LINK)	LF	80
845.1	REMOVE AND REPLACE FENCING (4' HIGH WROUGHT IRON)	LF	32
851	EXISTING MANHOLE ADJUSTMENTS	EA	1
855	RECONSTRUCTION OF EXISTING MANHOLES	EA	1
865	BYPASS PUMPING SMALL DIAMETER SANITARY SEWERS (SITE C-57)	LS	1
866	SANITARY SEWER MAIN TELEVISION PRE INSPECTION (8" - 15") WITH CLEANING	LF	369
900.1	REHABILITATION OF SANITARY SEWER BY PIPE BURST, 8" DIA. PIPE - ALL DEPTH	LF	369
910.1	MANHOLE REHABILITATION (STANDARD MANHOLES 4' DIA.)	VF	9.28
1109.1	SANITARY SEWER LATERAL RECONNECTIONS - OPEN CUT EXCAVATION - ALL DEPTH	EA	3
1103	POINT REPAIRS (UP TO 9 LF) 8" DIA. - ALL DEPTH	EA	2

BENCHMARK COORDINATE DATUM				
BM	NORTHING	EASTING	ELEVATION	DESCRIPTION
CP-1	13704779.945	2099798.244	722.91	MAG NAIL WITH SHINER STAMPED "MTR ENGINEERING" IN SIDEWALK
CP-2	13704977.970	2099798.230	722.31	MAG NAIL WITH SHINER STAMPED "MTR ENGINEERING" IN SIDEWALK
CP-3	13704960.242	2099501.974	724.46	MAG NAIL WITH SHINER STAMPED "MTR ENGINEERING" IN CURB

NO.	REV.	DATE	REVISION DESCRIPTION
1	JB	12/06/21	ADDENDUM 1



WESTON
 TEXAS REGISTERED ENGINEERING FIRM F-3123
 WESTON SOLUTIONS, INC.
 70 NE LOOP 410, SUITE 600
 SAN ANTONIO, TEXAS 78216-5842
 BPC WEST SEWERSHED PACKAGE 5B
 SITE C-57
 SEWER REHABILITATION PLAN - PIPE BURST

San Antonio Water System
SAWS
 JOB NO. 20-4504

NOTES	INITIALS	DATE
DESIGNED BY	RK	11/21
REVIEWED BY	JB	11/21

SCALE: AS SHOWN
 SHEET NO. M-04
 61 OF 76